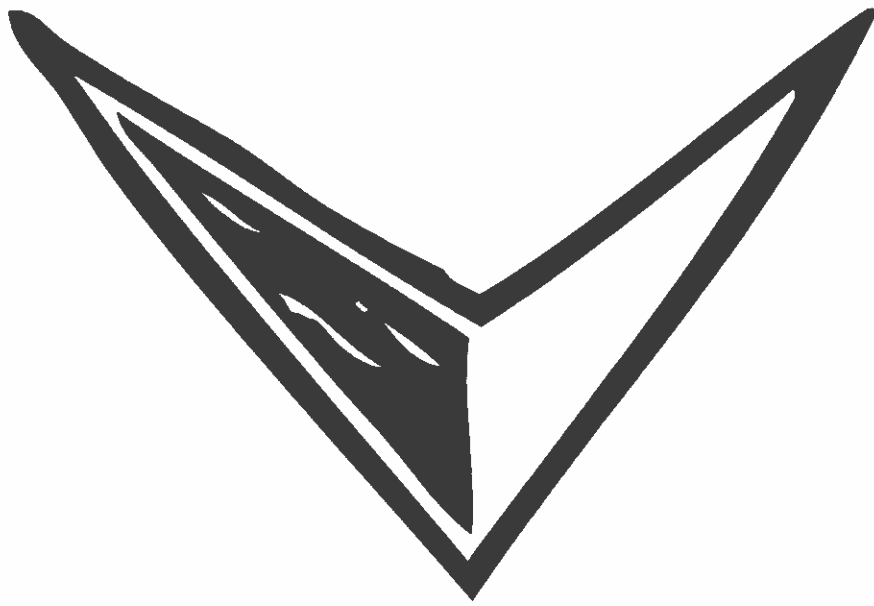


# NONFICTION TEXT STRUCTURE



# DESCRIPTIVE

Name \_\_\_\_\_

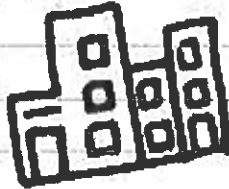


The

**DESCRIPTIVE**

NONFICTION TEXT STRUCTURES

NONFICTION TEXT STRUCTURE



KEY WORDS

HINT

BE ON THE

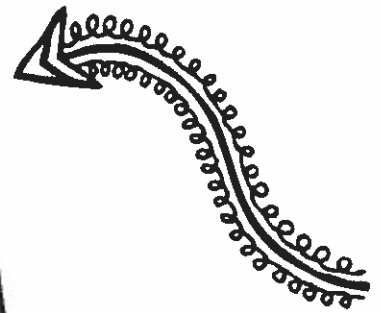
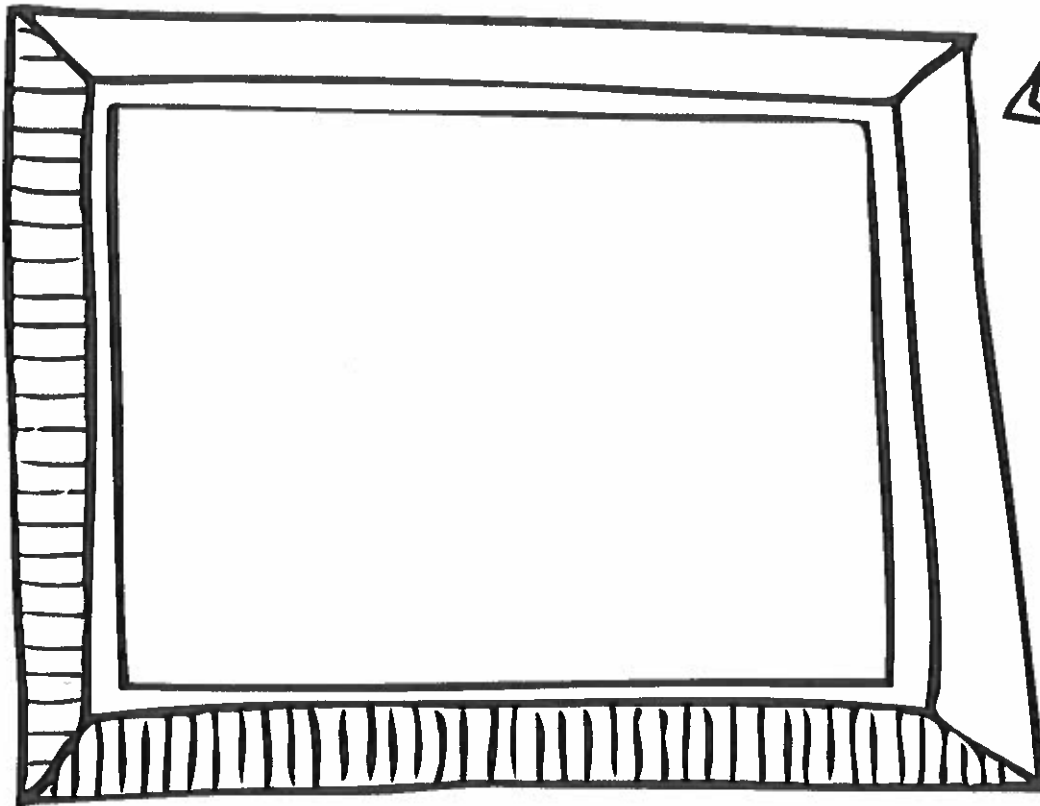
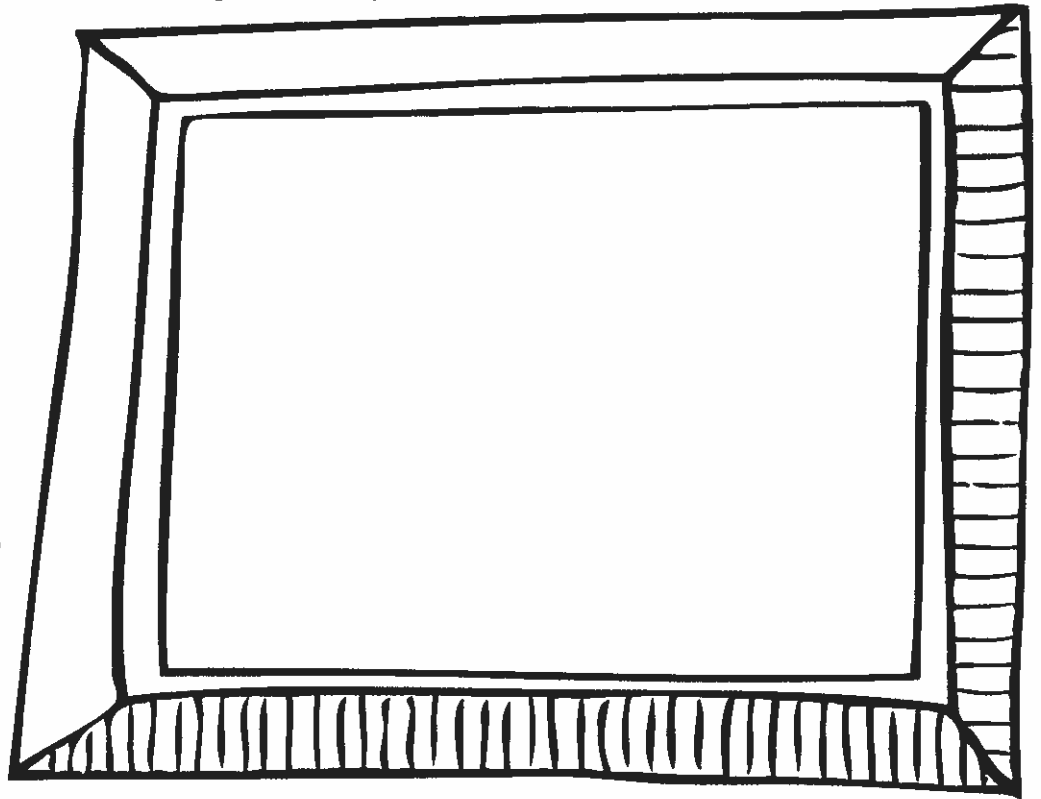
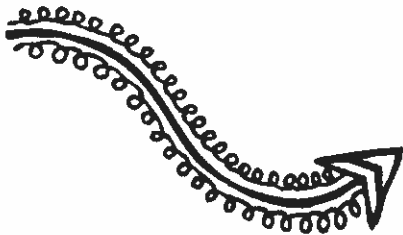
LOOKOUT

FOR REPEATED TOPIC WORDS OR PHRASES

# Doodle & Describe

Doodle a picture in each frame. Then, add 3-5 labels to describe the object that you have sketched.

My  
Favorite  
Possession



My Least  
Favorite  
Food

# GUESS WHAT?

Read each description below. Write the person, place, or thing that is being described on the line.

This is a lattice tower made of iron. It's located on the Champ de Mars in Paris, France. The monument is named after the engineer who designed and built the tower.

---

---

This is a round object. It is often covered in black and white pentagonal shapes. It can be kicked or thrown, but most often people use their feet with this object.

This is a large mammal with a short coat of fur. It has a long mane and tail. This animal has been used by people since ancient times. People ride it.

---

---

He grew up in rural Kentucky and went on to become the 16th President of the United States. On January 1, 1863, he issued the Emancipation Proclamation abolishing slavery.

---

---

# READING WITH OUR SENSES

Read the nonfiction passage, "Niagara Falls," then fill in the chart with descriptive details from the passage.

## Niagara Falls

Niagara Falls were formed over 12,000 years ago. They are the second largest falls in the world. The falls divide the United States and Canadian border and draw about 12 million visitors per year. The American Falls are 1,100 feet long. Originally as much as 5.5 billion gallons of water flowed over the falls per hour. Today, the flow of water is controlled by the Canadian and American governments to slow erosion. Still, visitors on the American side can feel the cold mist of water from the falls as they take in the magnificent sight. The roar of the water dropping 180 feet can be heard at this popular tourist attraction. Four Great Lakes supply the water to the Niagara River that creates the falls. Once over the falls, the water flows for 15 miles until it empties into Lake Ontario.

HEARING	FEELING
SEEING	

# DESCRIPTION TEXT STRUCTURE READING

Read the passage below and then answer the questions on the following page.

## The Taj Mahal

The Taj Mahal is one of the seven wonders of the world. It is a famous mausoleum in India. A mausoleum is a building that contains burial containers for the deceased. Shah Jahan, a Mughal king in the 17th century, built the Taj Mahal for his wife as a resting place for her tomb. Jahan poured his wealth into the creation of the monument.

The Taj Mahal is made from white marble stone. There are precious gems and stones embedded into its walls. It took nearly 20,000 stone carvers, masons, and artists almost 20 years to build the Taj Mahal. The building is perfectly symmetrical. One of its most famous features is a large white dome. It is sometimes called the "onion dome" because of its shape. The dome measures 115 feet high and is surrounded by 4 smaller domes. The entire monument is 561 feet tall. It appears pink in the morning when the sun rises. Then, it looks white during the day and golden during the evening.

The magnificent structure is one of India's most admired works of art. Millions of tourists visit it every year. The Taj Mahal monument also includes a large garden, a reflecting pool, a mosque, and other smaller mausoleums.



# The Taj Mahal

Answer the questions below based on the passage "The Taj Mahal."

Include evidence from the text to support your answers.

What is a mausoleum?

---

---

---

How does the author describe the Taj Mahal?

---

---

---

Describe the "onion dome."

---

---

---

Why is the Taj Mahal a magnificent monument?

---

---

---



# DESCRIPTION TEXT STRUCTURE READING

Read the passage below and then complete the graphic organizer on the following page.

## Giant Pandas

Giant pandas are considered national treasures in China. There are only about 1,600 living giant pandas in the world, making them endangered.

In the wild, giant pandas are found in the mountainous regions of central China. There are cool, wet bamboo forests where they live. The weather is often humid.

They have a distinctive black and white coat. They have black fur around their ears, eyes, muzzle, legs, and shoulders. Their thick coat of fur keeps them warm in the cool temperatures of their native habitat. If it gets too cold up in the mountains, they head down to the valleys where it is warmer.

Giant pandas' size make them different than other types of pandas. They live up to their name. They can grow to be 5 feet tall and weigh up to 300 pounds. Male Giant Pandas are typically 10% larger and 20% heavier than female pandas.

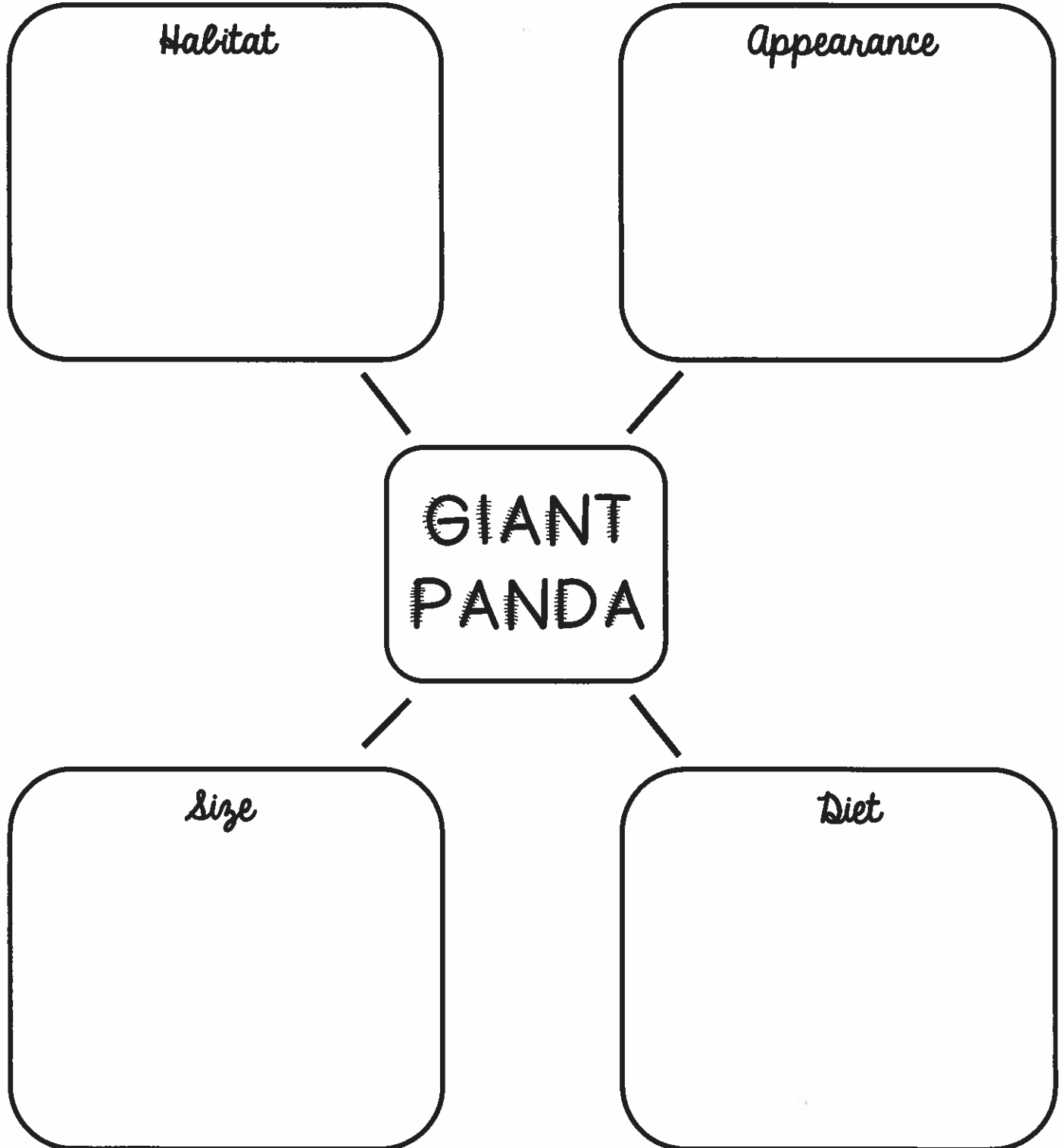
Bamboo is the most desired food of giant pandas. In fact, bamboo accounts for 99% of their diet. Their powerful jaw bones and strong teeth help them to crush and grind bamboo. They also have six fingers. Five "fingers" face forward and one "thumb" aides them in grabbing bamboo and climbing trees.

The giant panda was once widespread throughout southern and eastern China, but expanding human populations are closing in on their habitats. Work continues to help save and grow the giant panda population.

# Giant Pandas

Complete the graphic organizer based on the passage "Giant Pandas."

Include evidence from the text to support your answers.

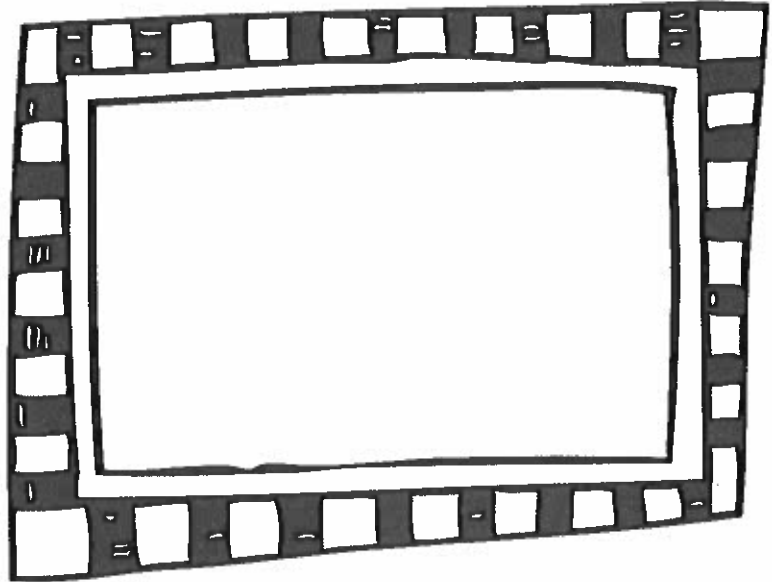


# DESCRIPTIVE TEXT STRUCTURE WRITING

You're going to write about your favorite place using the descriptive nonfiction text structure. In your writing you'll include specific details including sensory details to describe your place. First, complete the brainstorm. Then, write about your place.

## 1 Possible Places

Brainstorm 3-5 places that you know really well (and love) in the box. Then, select one place to write your descriptive text about.



## 2 Details

➤ Where is this place?

➤ What do you do here?

➤ What objects are in this place?

➤ What is special or unique about this place?

## 3 Sensory Descriptions

Describe what you <b>SEE</b>	Describe what you <b>HEAR</b>	Describe what you <b>FEEL</b>	Describe what you <b>SMELL</b>



# DESCRIPTIVE TEXT STRUCTURE WRITING

Combine your ideas from your brainstorm and write a descriptive passage about your favorite place.

A large rectangular box with a thick black border, containing 20 horizontal lines for writing.